

COMFORTS OF HOME, COUNTLESS AMENITIES
AND EVERYTHING IN BETWEEN

Iconic architecture. Lush green lawns. Picturesque views.
Tranquil surroundings. Superb accessibility.



RIPPLING WATERS AND DEWY MEADOWS

Open your window to breath-taking panoramas and air filled with crisp morning freshness. Step away from the bustling city and return home, to where lush greens and sparkling waters greet you at every turn.

MODERN FACADES AND EXPANSIVE LANDSCAPE

Six distinctive towers thoughtfully designed to offer spectacular views, with an inner sanctum of lush landscaping interwoven with a myriad of amenities and facilities. These unite to define the design genesis of The Panorama.

The architecture is modern and refreshing. A grand entrance surrounded by lush gardens and water features are the first welcomes. The sprawling central green with wide open space promises boundless enjoyment for the young and old. Lofty double-volume lift lobbies extend the luxurious sense of arrival upon returning home. Sky parks, cantilevered between two pairs of towers, form large communal decks where residents can relish breathtaking views while enjoying a rooftop party or working out in the gym.

The Panorama will be one of the rare condominiums where architectural distinction meets nature in harmony.



BEST OF URBAN CONVENIENCES CLOSE TO HOME

Enjoy the conveniences being near to AMK Hub, Junction 8 and a myriad of neighborhood shops to meet all your lifestyle needs. Easy connection to the CBD and rest of the island with excellent transportation network and the future Mayflower MRT Station within walking distance. Be within 1 km of the prestigious CHIJ St. Nicholas Girls' School, and many more established educational institutions. End your day with a scenic stroll in the nearby Lower Peirce Reservoir and Bishan Park.



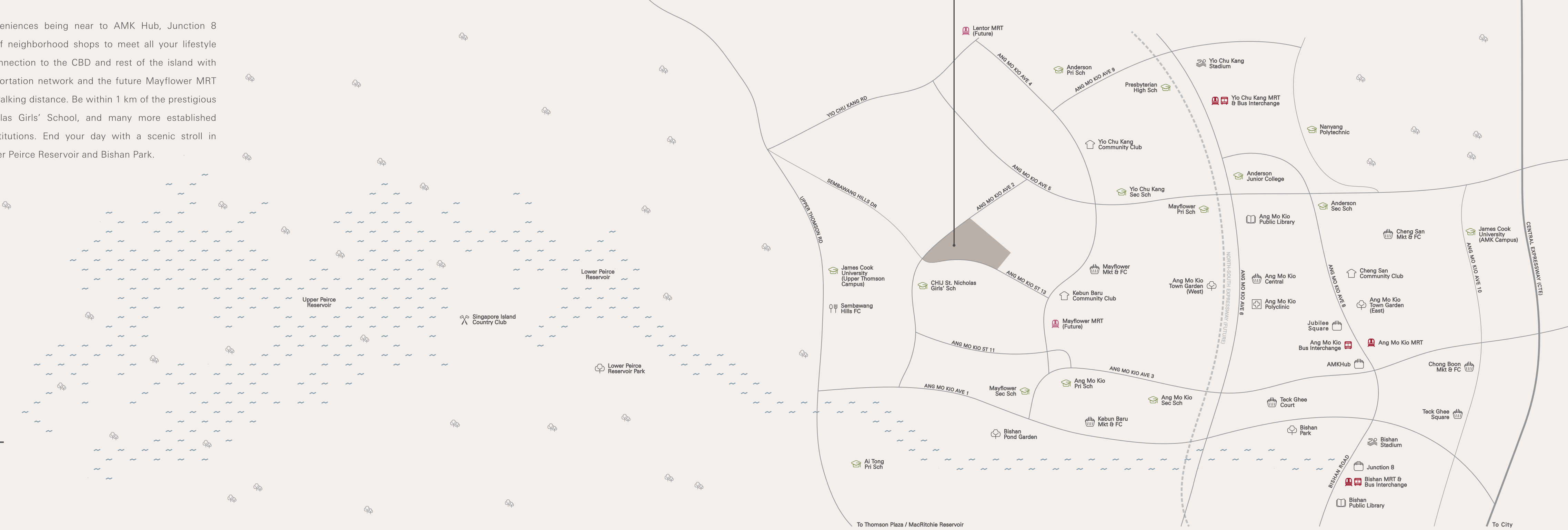
- LEGEND**
- Water
 - Wooded/Forested Area
 - Road
 - Expressway
 - Future Expressway

* Map is not drawn to scale

To Seletar Expressway (SLE)

To Seletar Airbase

THE PANORAMA



To Thomson Plaza / MacRitchie Reservoir

To City

PLAY

- 22 Sand Play
- 23 Kids' Riding Loop
- 24 Play Court
- 25 Adventure Play
- 26 Pets' Corner
- 27 Kids' Play

- 28 Arrival Plaza & Guard House (Basement 1)
- 29 Residents' Side Gate

POOL

- 01 Lap Pool
- 02 Jacuzzi Cove
- 03 Toddlers' Pool with Jets
- 04 Children's Pool
- 05 Aqua Gym
- 06 Pool Deck
- 07 Aqua Lounge

PONDER

- 08 Garden Chess
- 09 Reflective Pool
- 10 Eco Garden
- 11 Panorama Trail
- 12 Panoview
- 13 The Lawn

POWER

- 17 Joggers' Path
- 18 Meditation Alcove
- 19 Mini Putting Green
- 20 Yoga Pod
- 21 Fitness Corner

PARTY

- 14 BBQ Green
- 15 Pano Club House:
 - L2 Pano Gym
 - L1 Club Room 1 & 2, Changing Rooms and Toilets
 - B1 Screening Room and Games Room
- 16 Poolside Grill

SITE PLAN



Artist's Impression



Sky Gym

Artist's Impression

PARTY

- 30 Sunset Grill
- 31 Sky Grill
- 32 Sky Lounge
- 33 Zen Lounge

POWER

- 40 Sky Gym
- 41 Sky Studio
- 42 Flex n Stretch
- 43 Foot Reflex
- 44 Sky Jacuzzi

PONDER

- 34 Star Deck
- 35 Sunset Deck
- 36 Zen Deck
- 37 Sky Deck
- 38 Yoga Deck
- 39 Landscape Link on Level 13 between Blk 8 & 10

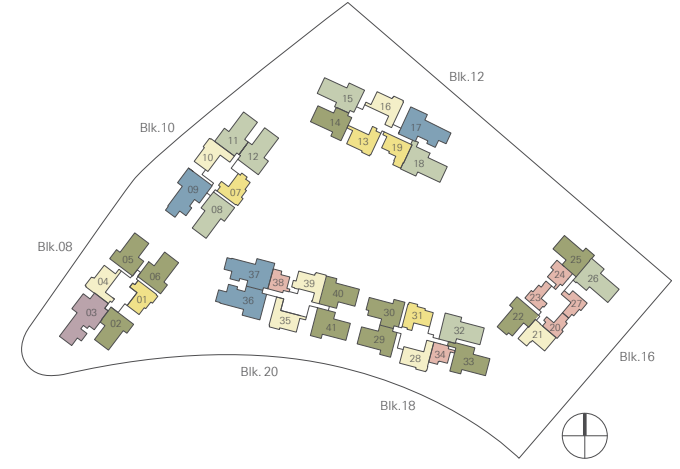
ROOF PLAN



N
+
-
Artist's Impression

UNIT DISTRIBUTION

- 1 - Bedroom
Type 1a, 1b, 1c, 1d, 1e
- 2 - Bedroom
Type 2a, 2b, 2c
- 2 - Bedroom + Study
Type 2Sa, 2Sb, 2Sc, 2Sd, 2Se
- 3 - Bedroom
Type 3a, 3b, 3c, 3c₁, 3d, 3e, 3f, 3g
- 3 - Bedroom + Study
Type 3Sa, 3Sb, 3Sc, 3Sd, 3Se, 3Sf
- 4 - Bedroom
Type 4a, 4b, 4c
- 5 - Bedroom
Type 5a
- Penthouse
Type PHa, PHb, PHc, PHd, PHe, PHf



Block 8

01	02	03	04	05	06
----	----	----	----	----	----

Block 10

07	08	09	10	11	12
----	----	----	----	----	----

Block 12

13	14	15	16	17	18	19
----	----	----	----	----	----	----

Block 16

20	21	22	23	24	25	26	27
----	----	----	----	----	----	----	----

Block 18

28	29	30	31	32	33	34
----	----	----	----	----	----	----

Block 20

41	35	36	37	38	39	40
----	----	----	----	----	----	----

Sky Terrace					
20	2a	3d	PHa	3c	3c
19	2a	3a	5a	2Sd	3c
18	2a	3a	5a	2Sd	3c
17	2a	3a	5a	2Sd	3c
16	2a	3a	5a	2Sd	3c
15	2a	3a	5a	2Sd	3c
14	2a	3a	5a	2Sd	3c
13	2a	3a	5a	2Sd	3c
12	2a	3a	5a	2Sd	3c
11	2a	3a	5a	2Sd	3c
10	2a	3a	5a	2Sd	3c
9	2a	3a	5a	2Sd	3c
8	2a	3a	5a	2Sd	3c
7	2a	3a	5a	2Sd	3c
6	2a	3a	5a	2Sd	3c
5	2a	3a	5a	2Sd	3c
4	2a	3a	5a	2Sd	3c
3	2a	3a	5a	2Sd	3c
2	Lobby	3a	5a	2Sd	3c
1	Lobby	3a	5a	2Sd	3c

Landscape Link

Sky Terrace					
20	2a	3Sc	4b	PHb	3Se
19	2a	3Sc	4b	2Sb	3Sa
18	2a	3Sc	4b	2Sb	3Sa
17	2a	3Sc	4b	2Sb	3Sa
16	2a	3Sc	4b	2Sb	3Sa
15	2a	3Sc	4b	2Sb	3Sa
14	2a	3Sc	4b	2Sb	3Sa
13	2a	3Sc	4b	2Sb	3Sa
12	2a	3Sc	4b	2Sb	3Sa
11	2a	3Sc	4b	2Sb	3Sa
10	2a	3Sc	4b	2Sb	3Sa
9	2a	3Sc	4b	2Sb	3Sa
8	2a	3Sc	4b	2Sb	3Sa
7	2a	3Sc	4b	2Sb	3Sa
6	2a	3Sc	4b	2Sb	3Sa
5	2a	3Sc	4b	2Sb	3Sa
4	2a	3Sc	4b	2Sb	3Sa
3	2a	3Sc	4b	2Sb	3Sa
2	Lobby	3Sc	4b	2Sb	3Sa
1	Lobby	3Sc	4b	2Sb	3Sa

Sky Terrace					
17	2c	3d	3Se	PHc	3Sc
16	2c	3d	3Se	2Sd	4b
15	2c	3d	3Se	2Sd	4b
14	2c	3d	3Se	2Sd	4b
13	2c	3d	3Se	2Sd	4b
12	2c	3d	3Se	2Sd	4b
11	2c	3d	3Se	2Sd	4b
10	2c	3d	3Se	2Sd	4b
9	2c	3d	3Se	2Sd	4b
8	2c	3d	3Se	2Sd	4b
7	2c	3d	3Se	2Sd	4b
6	2c	3d	3Se	2Sd	4b
5	2c	3d	3Se	2Sd	4b
4	2c	3d	3Se	2Sd	4b
3	2c	3d	3Se	2Sd	4b
2	Lobby	3d	3Se	2Sd	4b
1	Lobby	3d	3Se	2Sd	4b

Sky Terrace					
17	1b		PHf	1d	3g
16	1b	2Sc	3e	1c	1d
15	1b	2Sc	3e	1c	1d
14	1b	2Sc	3e	1c	1d
13	1b	2Sc	3e	1c	1d
12	1b	2Sc	3e	1c	1d
11	1b	2Sc	3e	1c	1d
10	1b	2Sc	3e	1c	1d
9	1b	2Sc	3e	1c	1d
8	1b	2Sc	3e	1c	1d
7	1b	2Sc	3e	1c	1d
6	1b	2Sc	3e	1c	1d
5	1b	2Sc	3e	1c	1d
4	1b	2Sc	3e	1c	1d
3	1b	2Sc	3e	1c	1d
2		2Sc	3c	Lobby	1d
1		2Sc	3c	Lobby	1d

Sky Terrace					
17	2Sb	3d	PHe	3Sd	3b
16	2Sb	3d	3f	2a	3Sd
15	2Sb	3d	3f	2a	3Sd
14	2Sb	3d	3f	2a	3Sd
13	2Sb	3d	3f	2a	3Sd
12	2Sb	3d	3f	2a	3Sd
11	2Sb	3d	3f	2a	3Sd
10	2Sb	3d	3f	2a	3Sd
9	2Sb	3d	3f	2a	3Sd
8	2Sb	3d	3f	2a	3Sd
7	2Sb	3d	3f	2a	3Sd
6	2Sb	3d	3f	2a	3Sd
5	2Sb	3d	3f	2a	3Sd
4	2Sb	3d	3f	2a	3Sd
3	2Sb	3d	3f	2a	3Sd
2			3f	Lobby	3Sd
1			3f	Lobby	3Sd

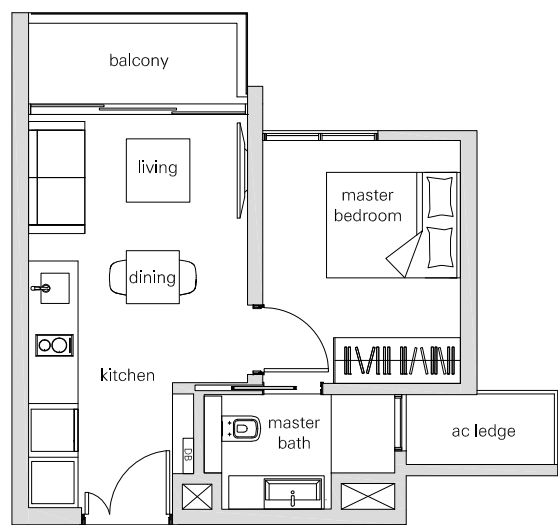
Sky Terrace					
17		PHd	4c	4a	1a
16	3c	2Se	4c	4a	1a
15	3c	2Se	4c	4a	1a
14	3c	2Se	4c	4a	1a
13	3c	2Se	4c	4a	1a
12	3c	2Se	4c	4a	1a
11	3c	2Se	4c	4a	1a
10	3c	2Se	4c	4a	1a
9	3c	2Se	4c	4a	1a
8	3c	2Se	4c	4a	1a
7	3c	2Se	4c	4a	1a
6	3c	2Se	4c	4a	1a
5	3c	2Se	4c	4a	1a
4	3c	2Se	4c	4a	1a
3	3c	2Se	4c	4a	1a
2			4a	1a	Lobby
1			4a	1a	Lobby



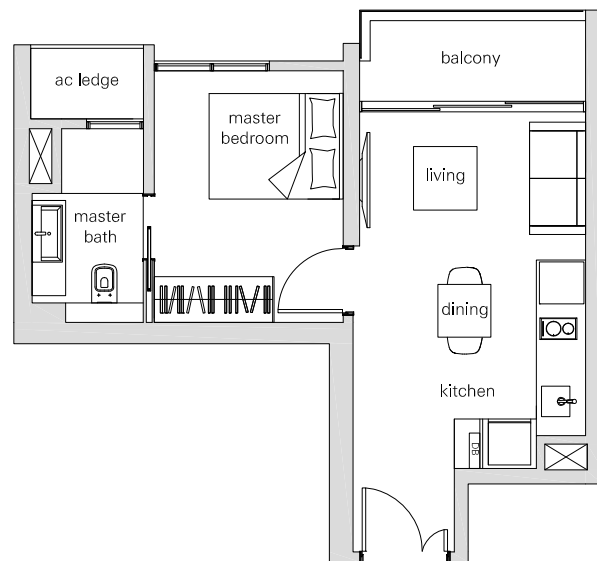
EXQUISITE SENSE OF SPACE

From 1 to 5-bedroom apartments to penthouses, every space has been thoughtfully designed with the most exacting selection of fittings and architectural touches.

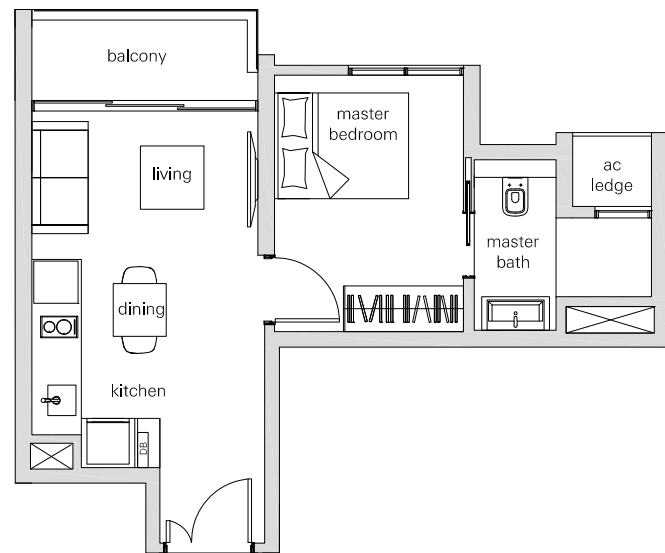
1 BEDROOM



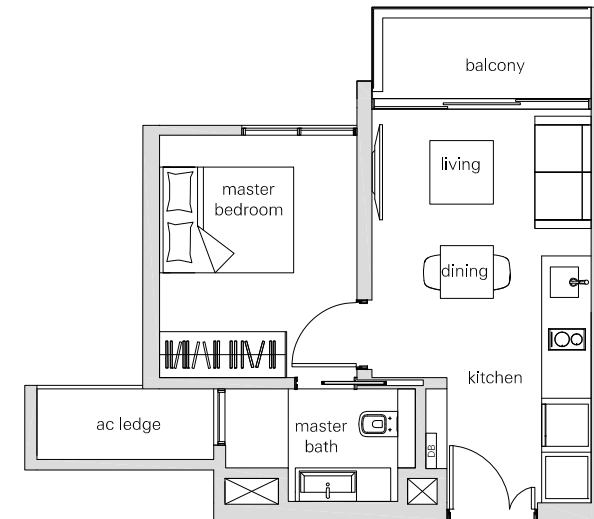
Type 1a
40sqm / 431sqft
Block 20
#01-38 to #17-38



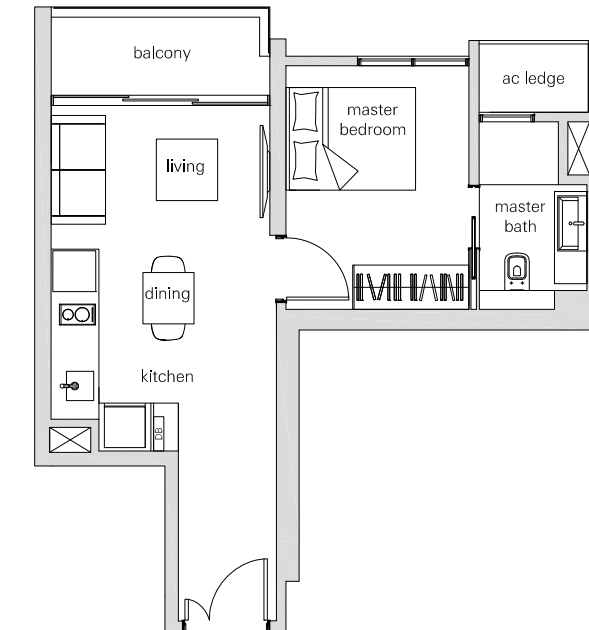
Type 1b
42sqm / 452sqft
Block 16
#03-20 to #17-20



Type 1c
42sqm / 452sqft
Block 16
#03-23 to #16-23



Type 1d
40sqm / 431sqft
Block 16
#01-24 to #17-24
Block 18
#03-34 to #17-34

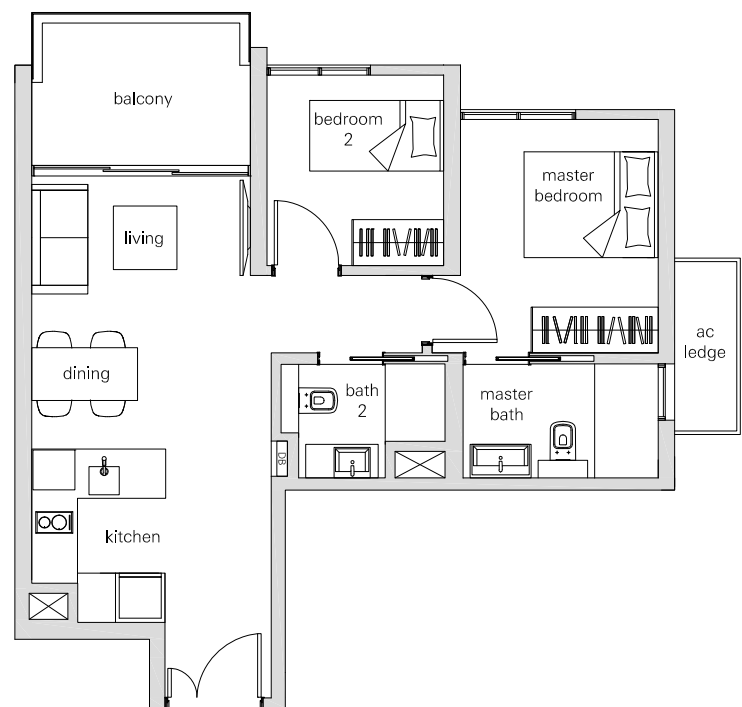


Type 1e
44sqm / 474sqft
Block 16
#01-27 to #17-27

1 BEDROOM



2 BEDROOM

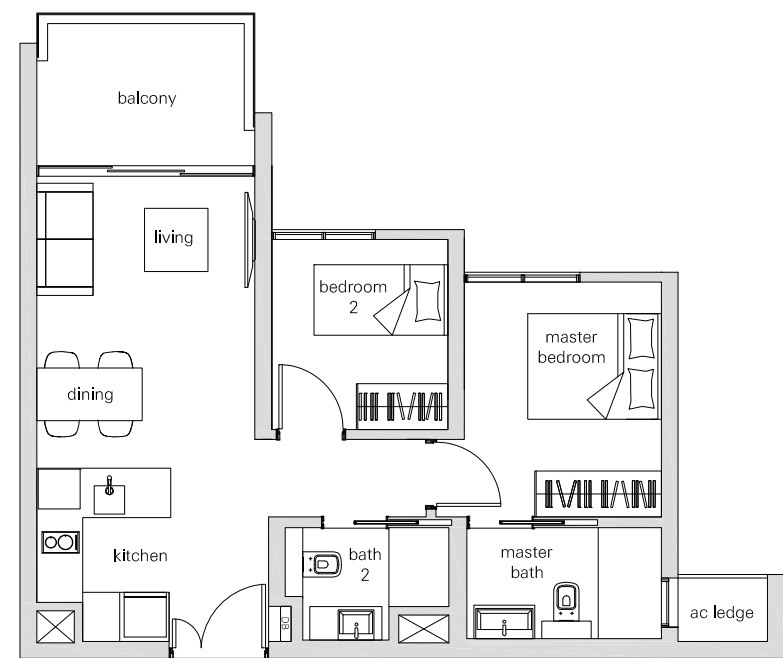


Type 2a
65sqm / 700sqft

Block 8
#03-01 to #20-01

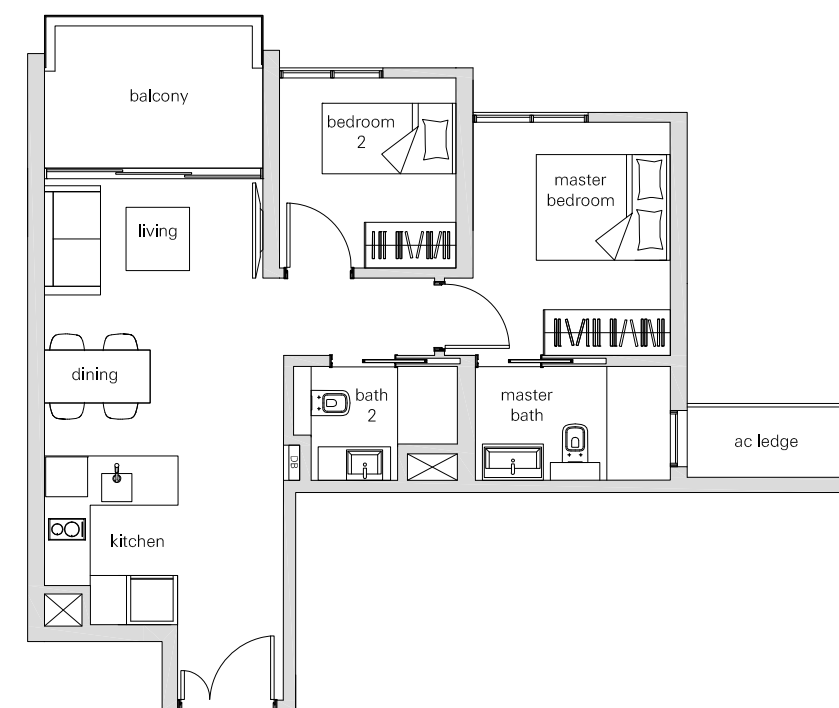
Block 10
#03-07 to #20-07
(mirror image)

Block 18
#03-31 to #16-31



Type 2b
63sqm / 678sqft

Block 12
#01-19 to #17-19



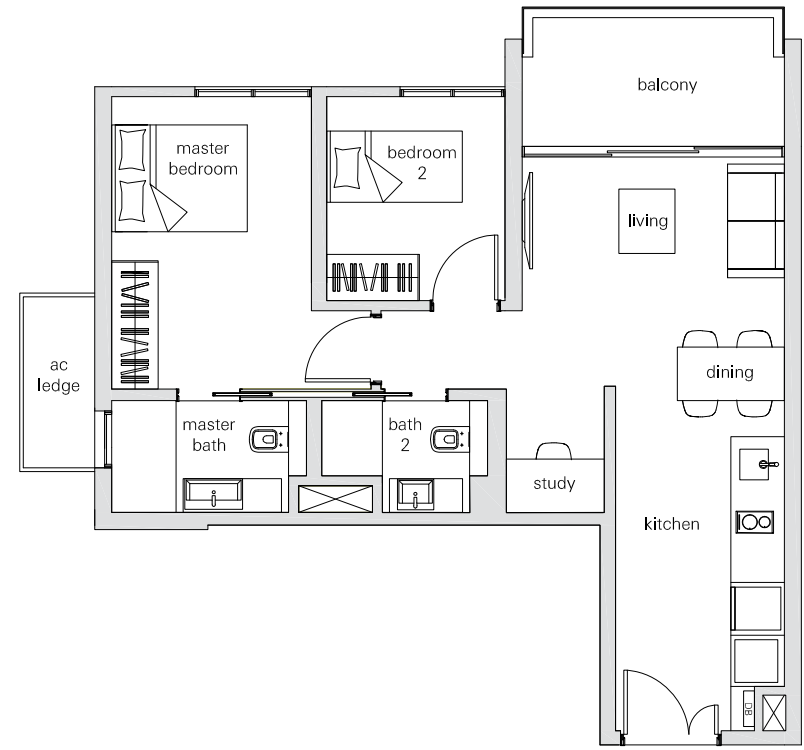
Type 2c
65sqm / 700sqft

Block 12
#03-13 to #17-13

2 BEDROOM



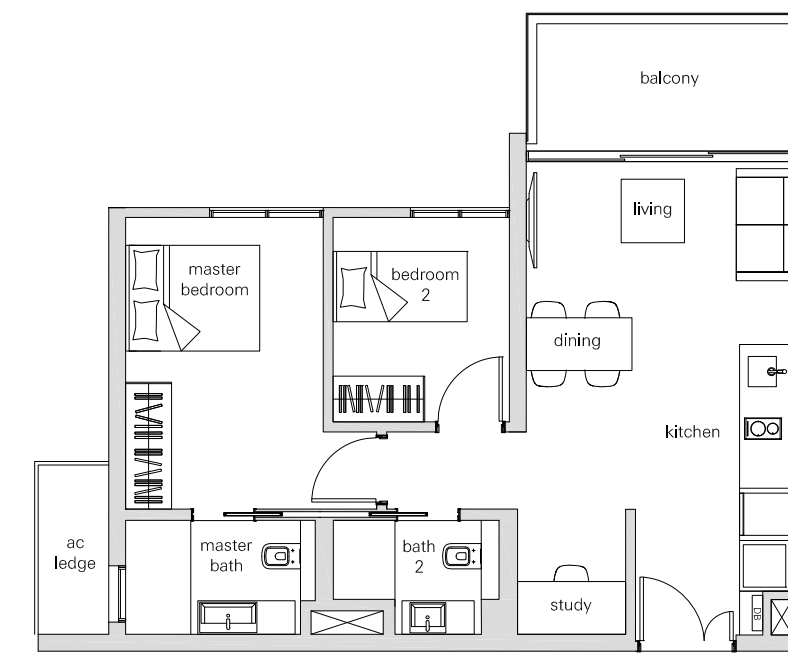
2
BEDROOM + STUDY



Type 2Sa
72sqm / 775sqft
Block 20
#03-39 to #17-39



Type 2Sb
73sqm / 786sqft
Block 10
#01-10 to #19-10
Block 18
#03-28 to #17-28
(mirror image)



Type 2Sc
72sqm / 775sqft
Block 16
#01-21 to #16-21



Type 2Sd
74sqm / 797sqft
Block 8
#01-04 to #19-04
Block 12
#01-16 to #16-16
(mirror image)

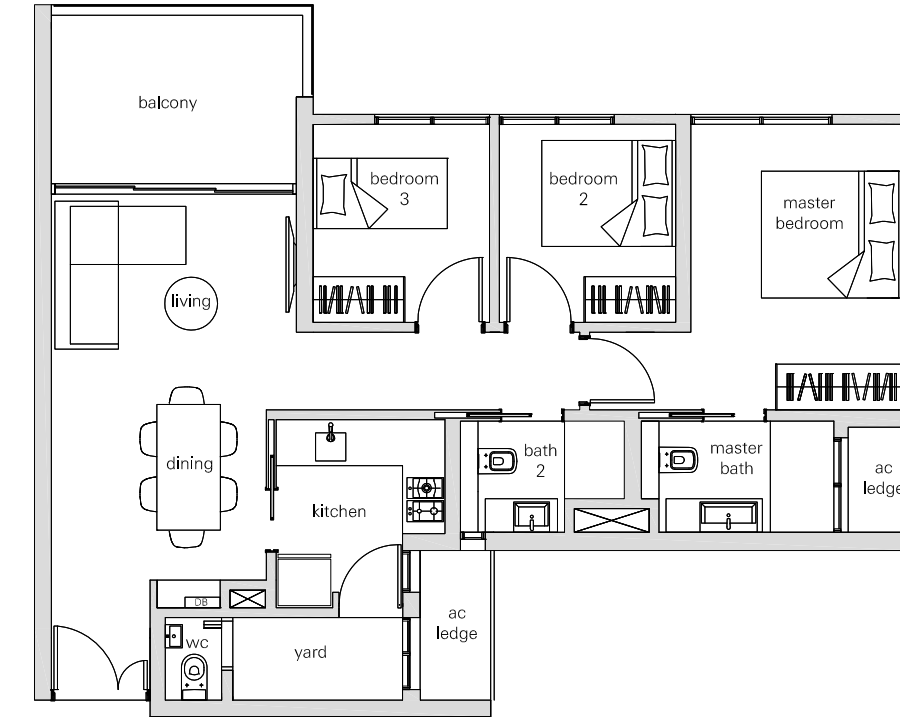


2 BEDROOM + STUDY

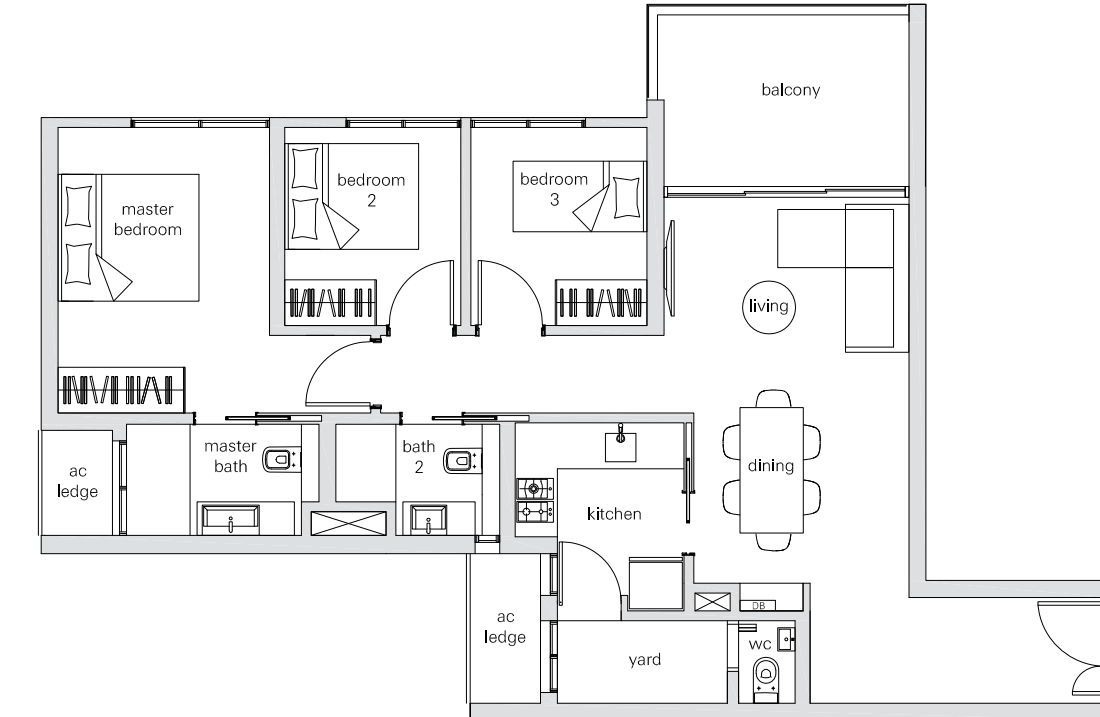


Type 2Se
74sqm / 797sqft
Block 20
#03-35 to #16-35

3 BEDROOM



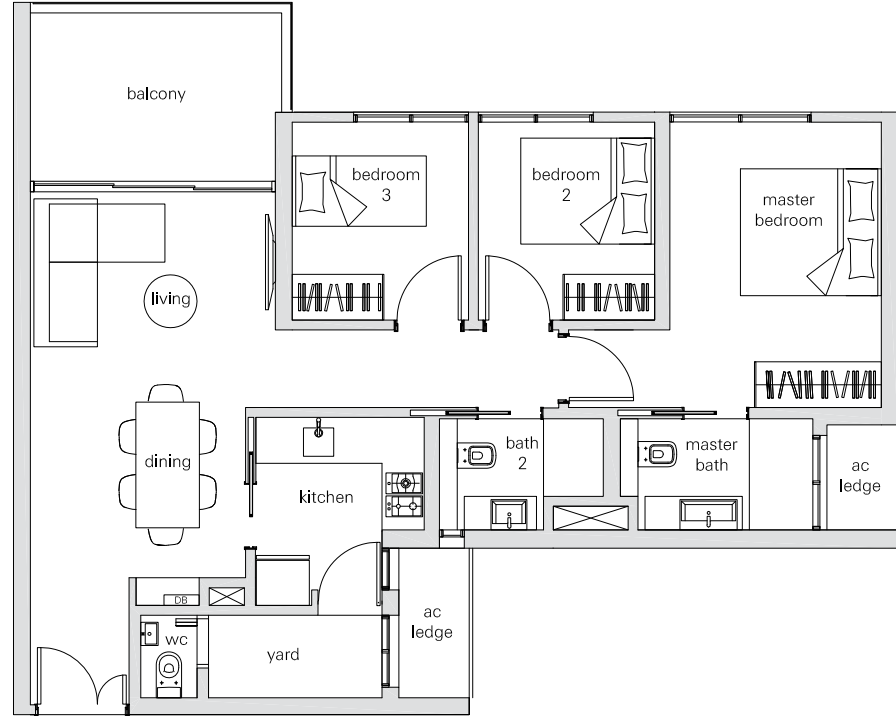
Type 3a
94sqm / 1012sqft
Block 8
#01-02 to #19-02



Type 3b
99sqm / 1066sqft
Block 18
#03-33 to #17-33



3 BEDROOM



Type 3c
94sqm / 1012sqft

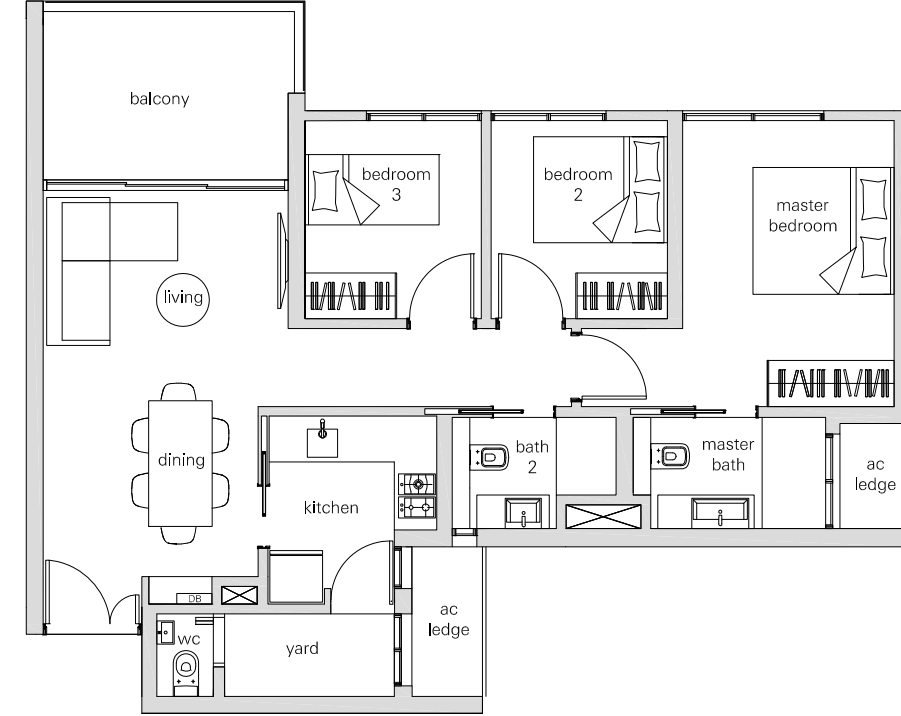
Block 8
#01-05 to #20-05
#01-06 to #20-06
(mirror image)

Block 16
#01-22 to #02-22
(mirror image)

Block 20
#02-40 to #17-40
#03-41 to #16-41
(mirror image)

Type 3c₁
95sqm / 1023sqft

Block 20
#01-40

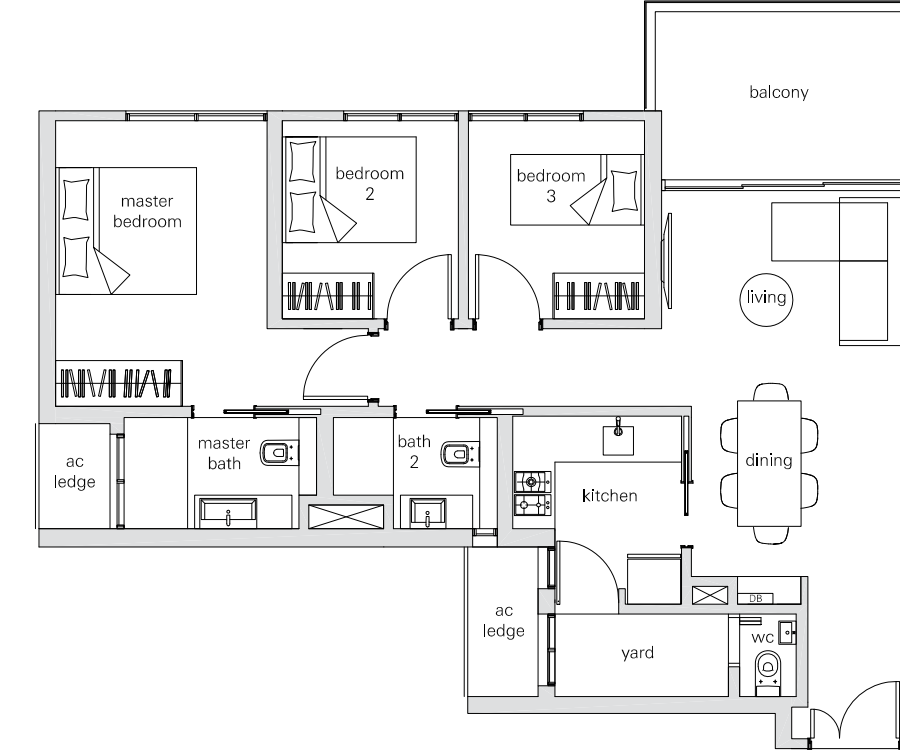


Type 3d
92sqm / 990sqft

Block 8
#20-02

Block 12
#01-14 to #17-14

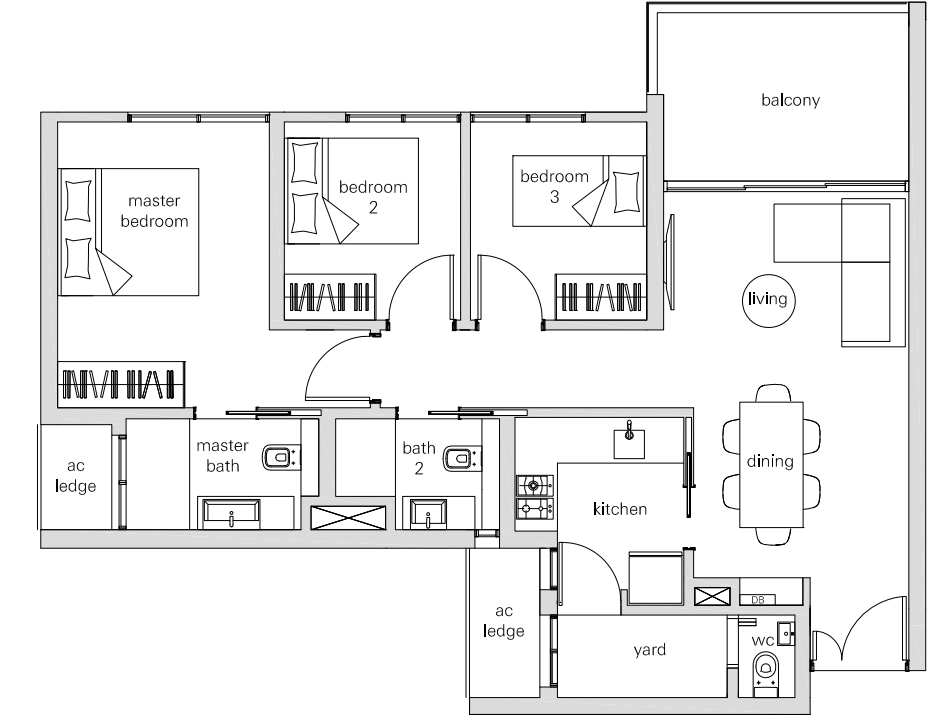
Block 18
#03-29 to #17-29



Type 3e
95sqm / 1023sqft

Block 16
#03-22 to #16-22

3 BEDROOM

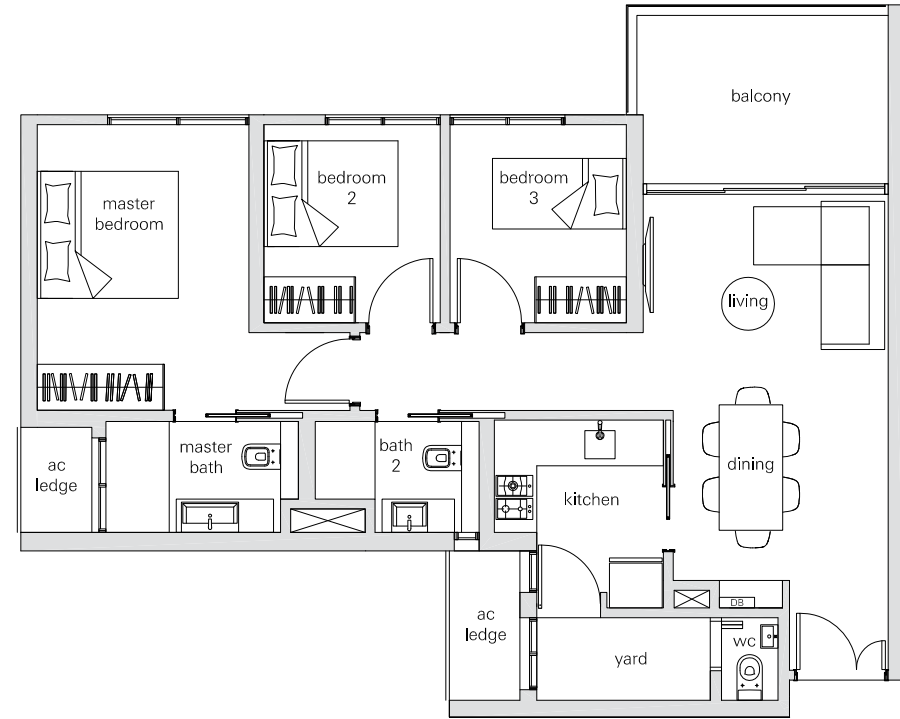


Type 3f
93sqm / 1001sqft

Block 18
#01-30 to #16-30

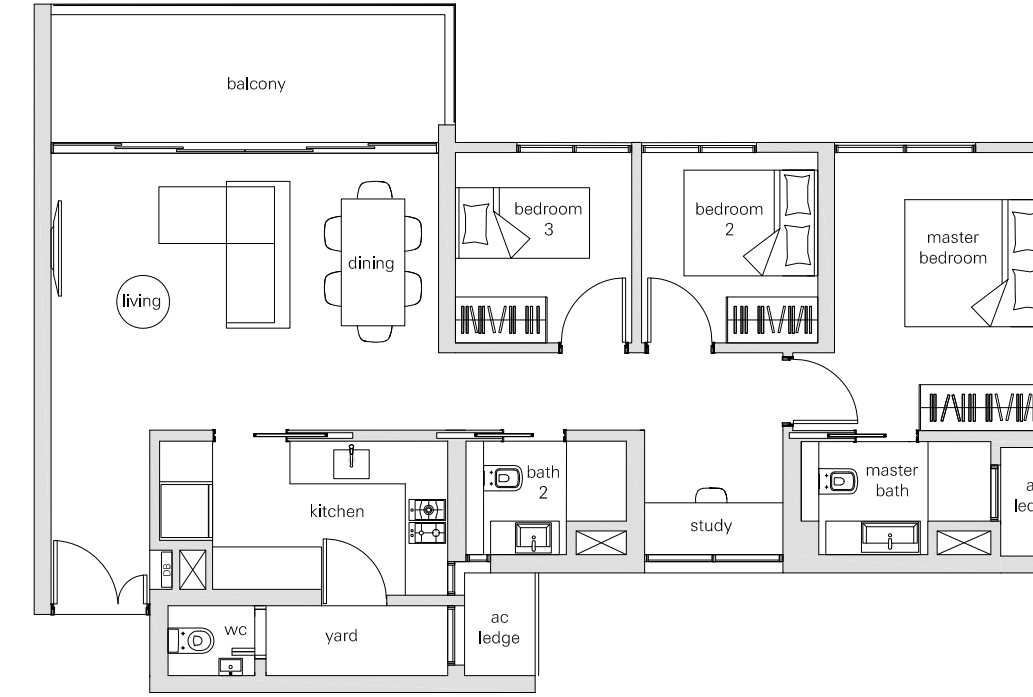


3 BEDROOM

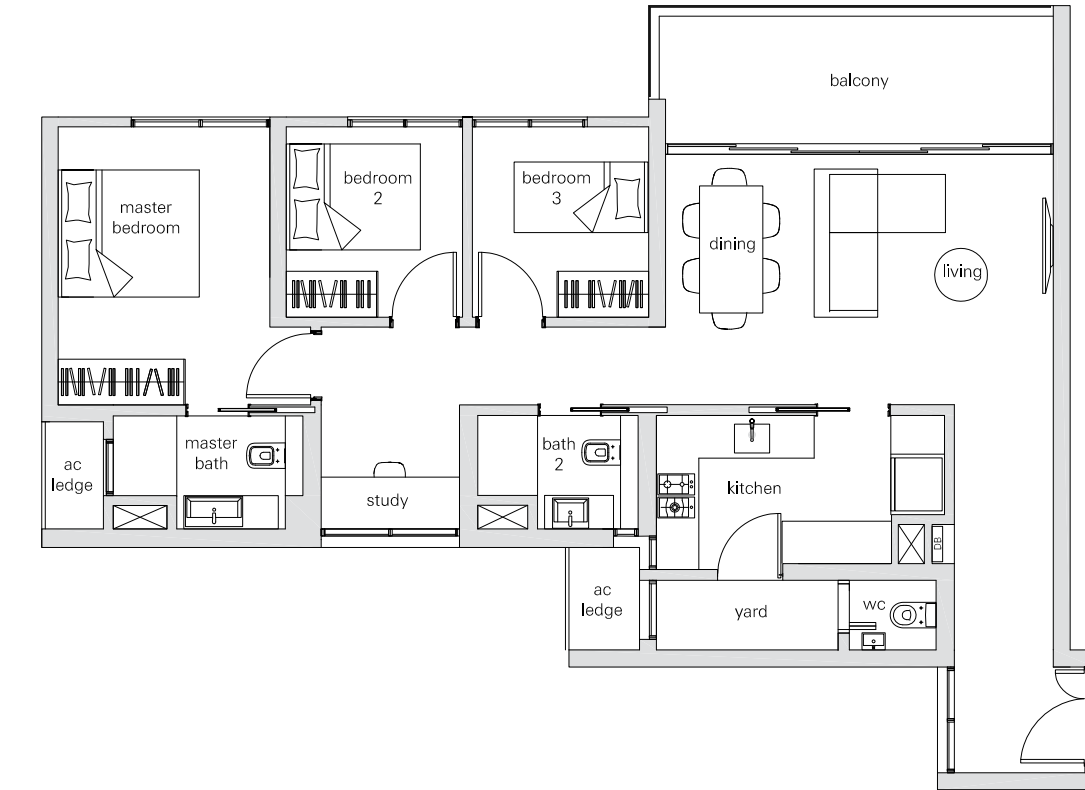


Type 3g
93sqm / 1001sqft
Block 16
#01-25 to #17-25

3 BEDROOM + STUDY



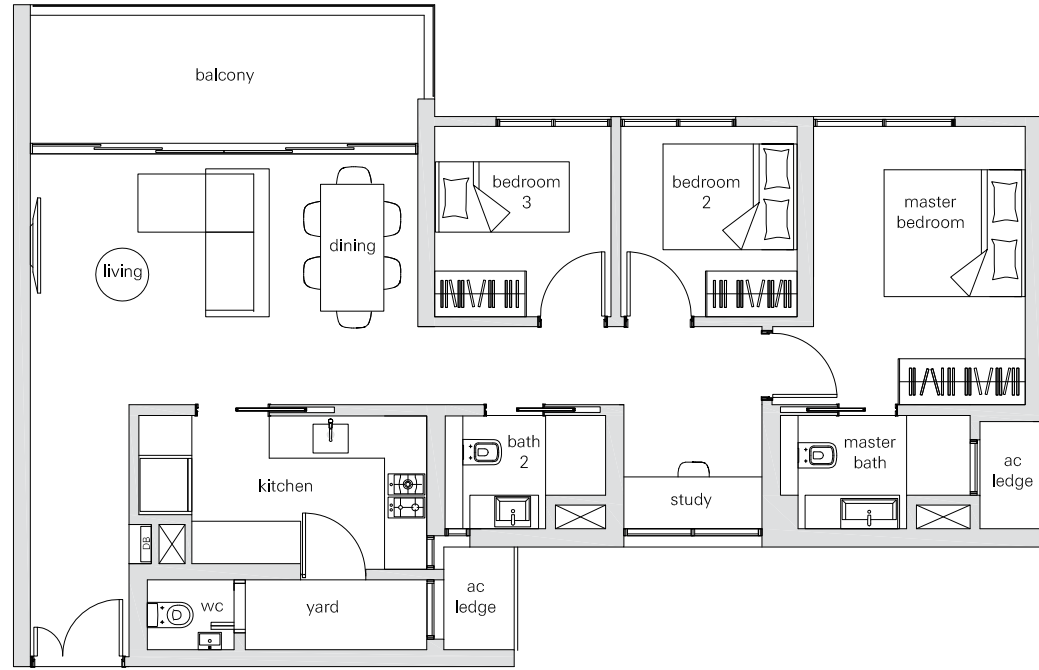
Type 3Sa
106sqm / 1141sqft
Block 10
#01-11 to #19-11



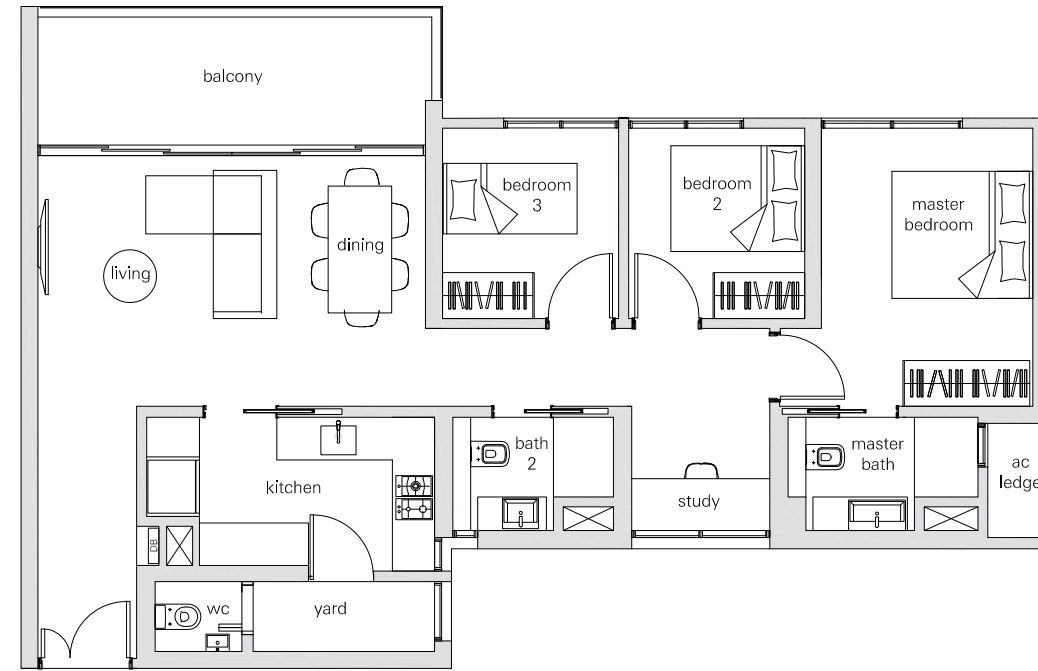
Type 3Sb
108sqm / 1163sqft
Block 12
#02-18 to #16-18



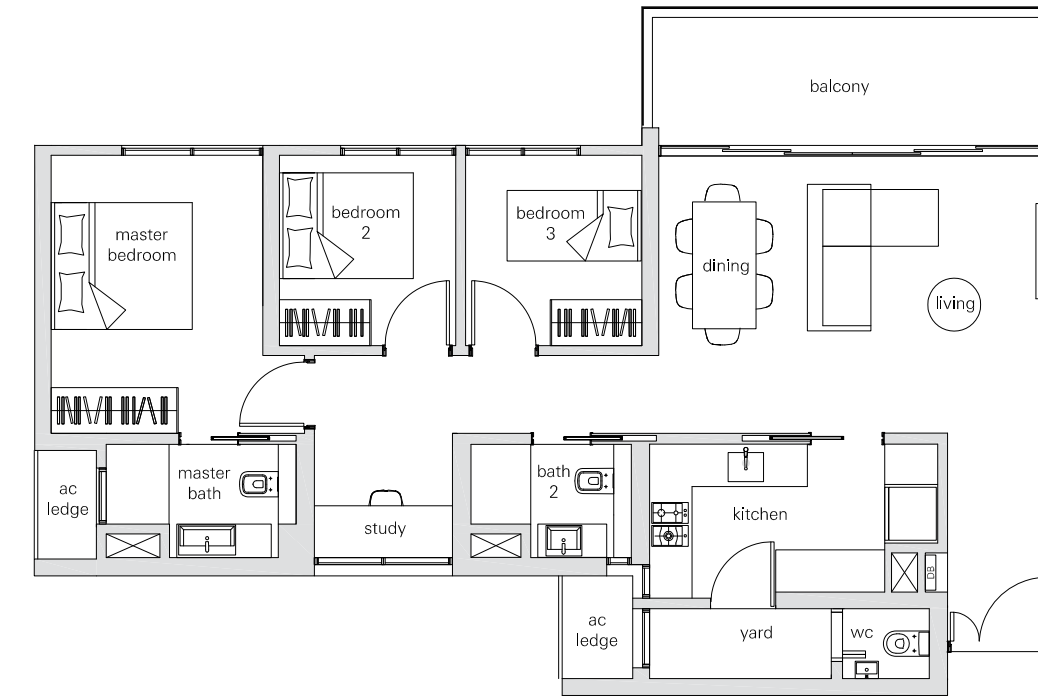
3
BEDROOM + STUDY



Type 3Sc
105sqm / 1130sqft
Block 10
#01-08 to #20-08
Block 12
#01-18 & #17-18
(mirror image)

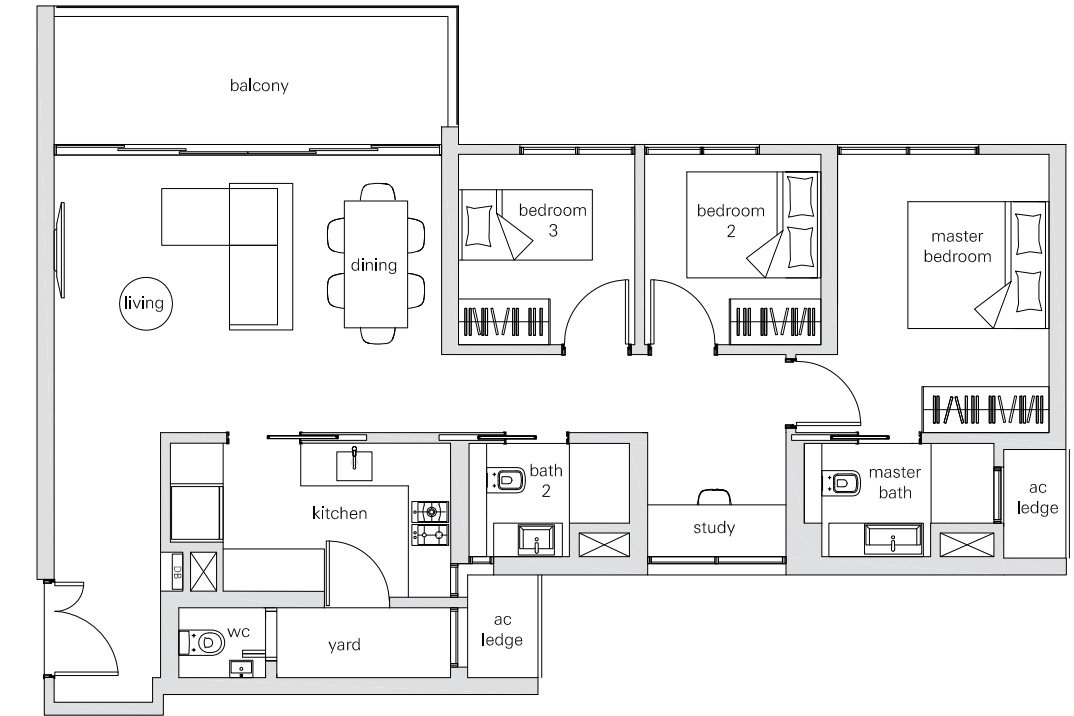


Type 3Sd
103sqm / 1109sqft
Block 18
#01-32 to #17-32



Type 3Se
106sqm / 1141sqft
Block 10
#01-12 to #20-12
Block 12
#01-15 to #17-15

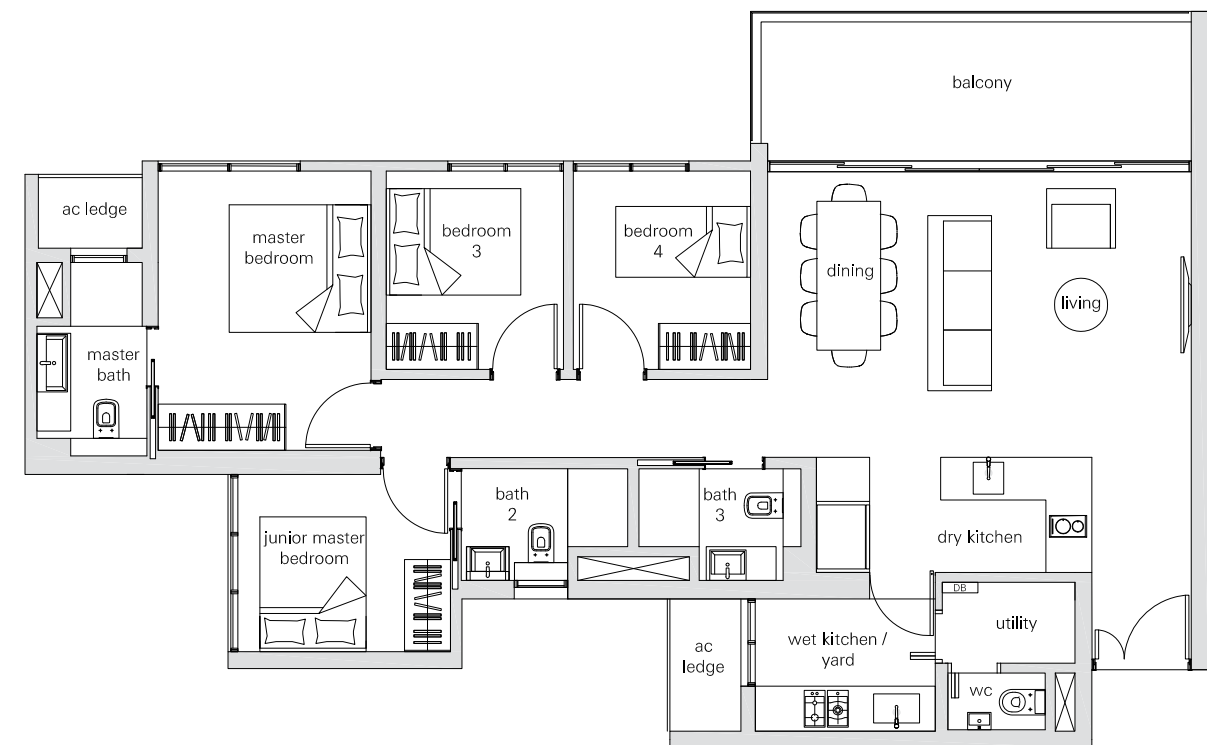
3
BEDROOM + STUDY



Type 3Sf
108sqm / 1163sqft
Block 16
#01-26 to #17-26

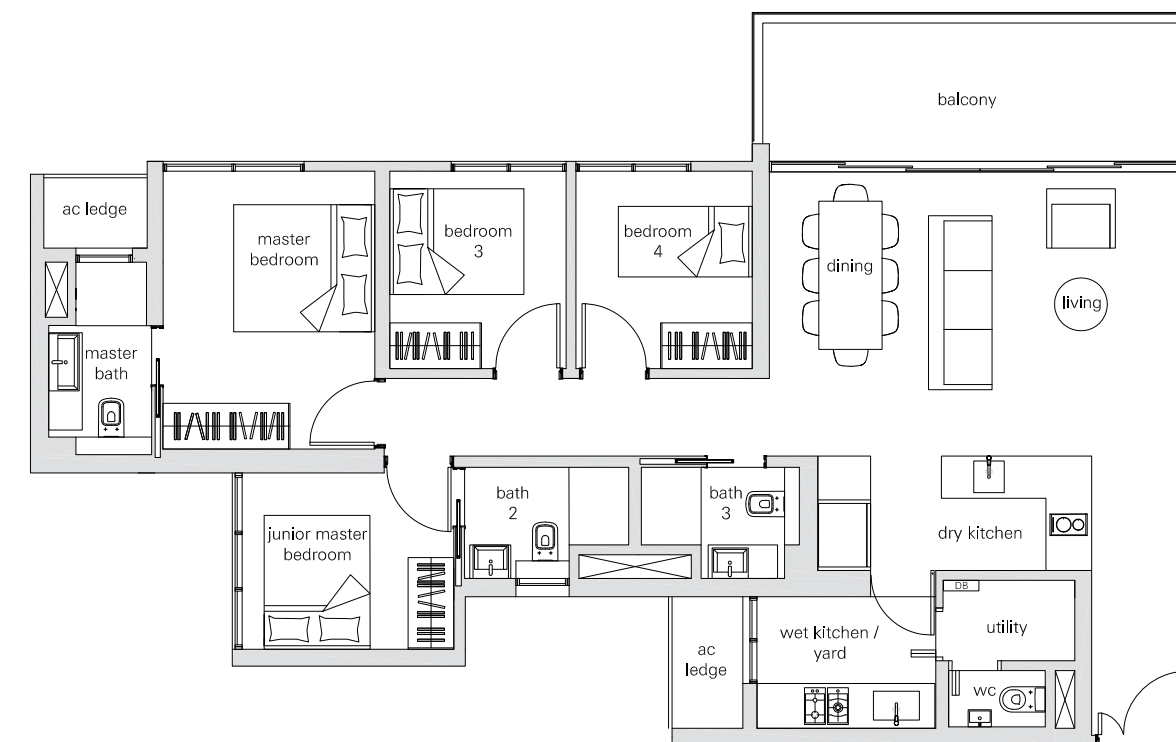


4
BEDROOM



Type 4a
122sqm / 1313sqft
Block 20
#01-37 to #17-37

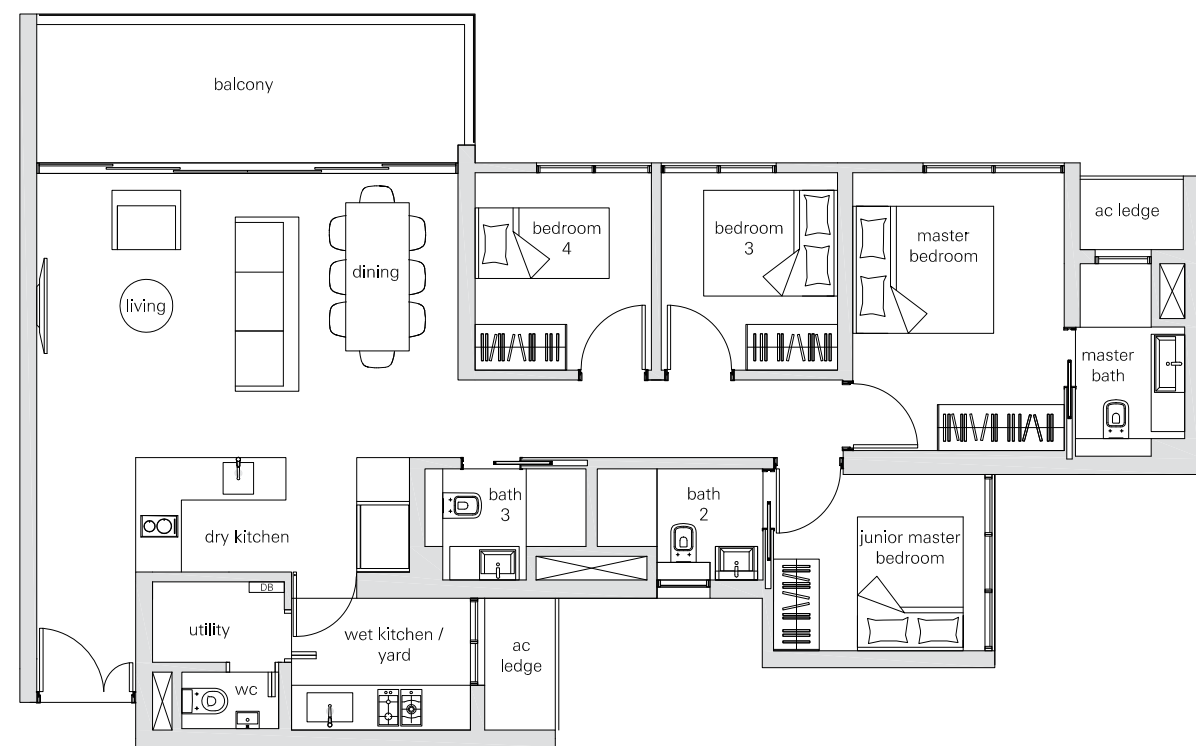
4
BEDROOM



Type 4b
124sqm / 1335sqft
Block 10
#01-09 to #20-09
Block 12
#01-17 to #16-17
(mirror image)

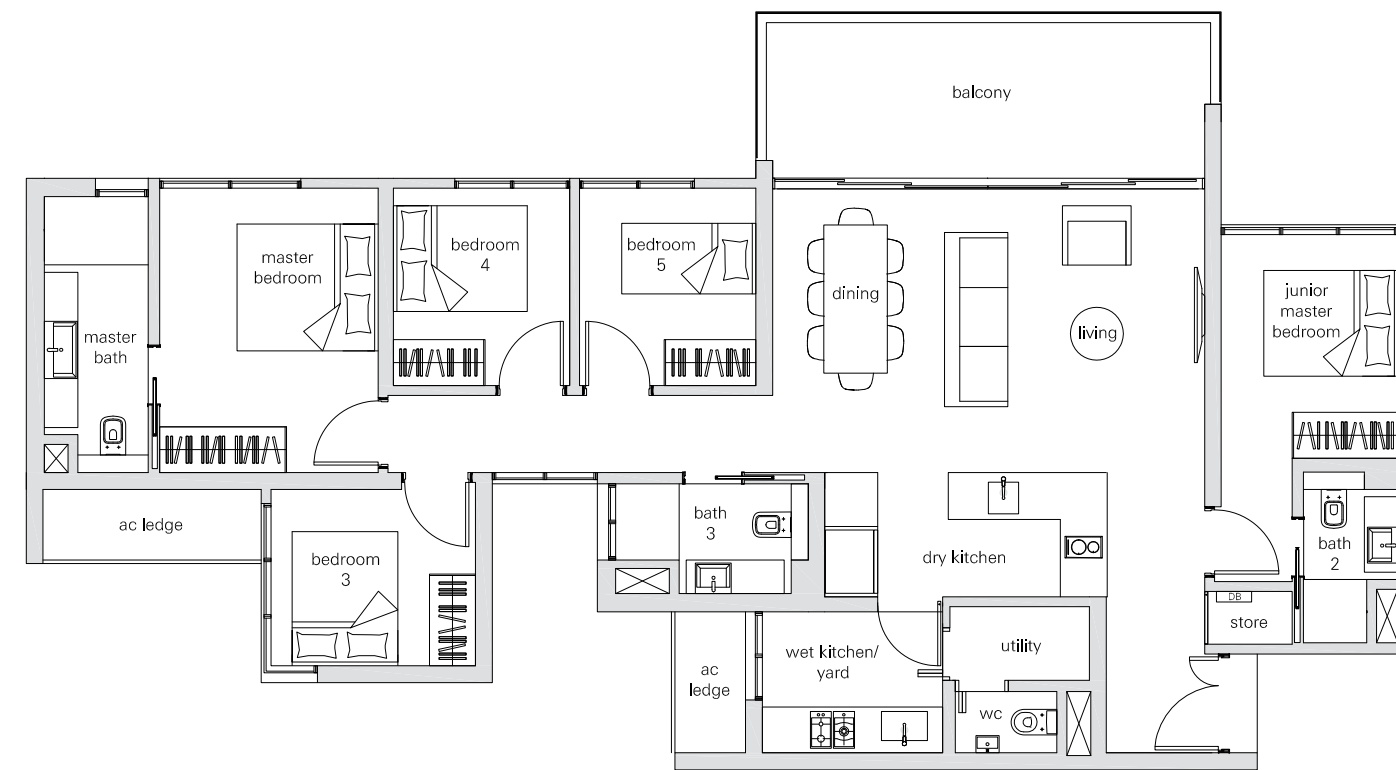


4
BEDROOM



Type 4c
123sqm / 1324sqft
Block 20
#03-36 to #17-36

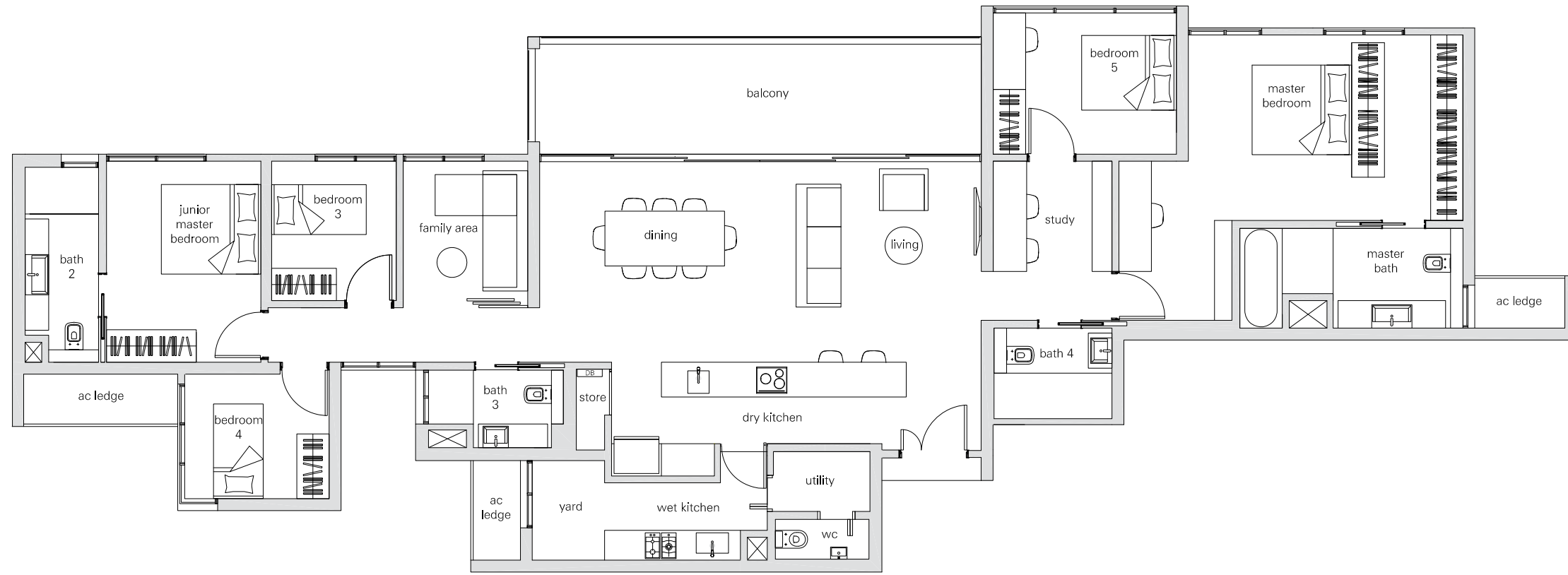
5
BEDROOM



Type 5a
145sqm / 1561sqft
Block 8
#01-03 to #19-03



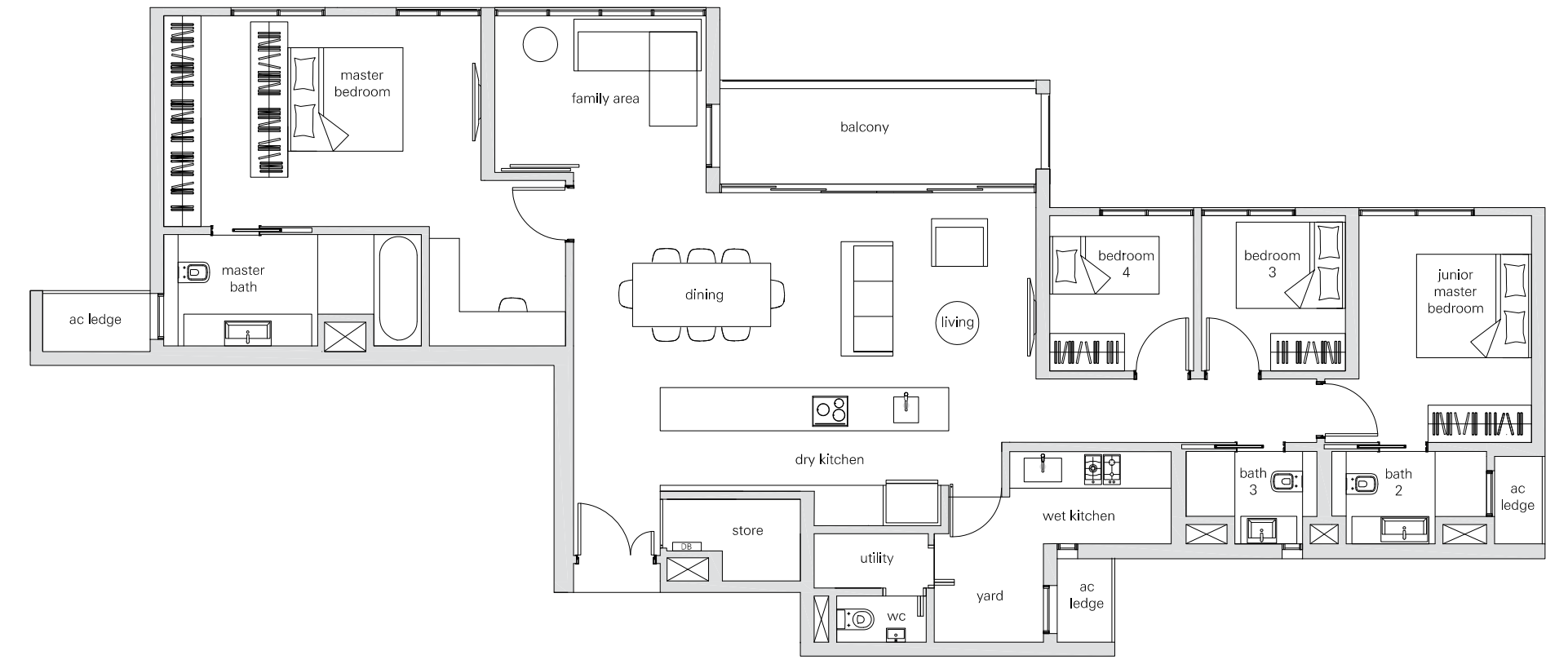
PENTHOUSE



Type PHa
221sqm / 2379sqft

Block 8
#20-03

PENTHOUSE

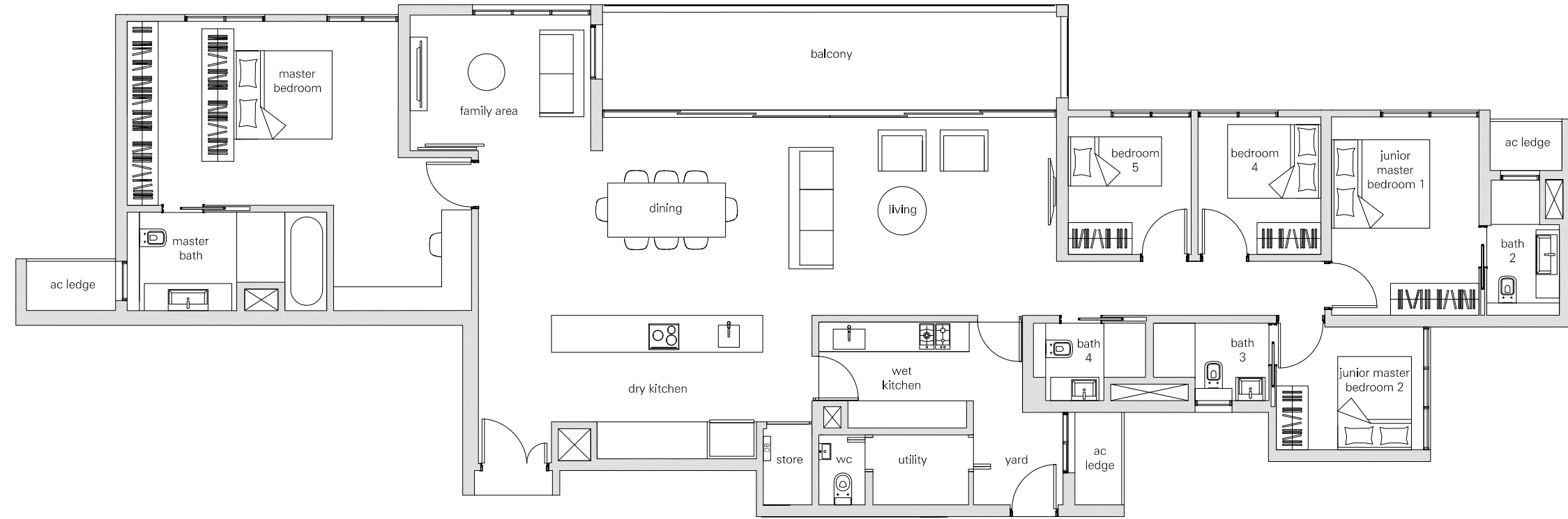


Type PHb
178sqm / 1916sqft

Block 10
#20-10



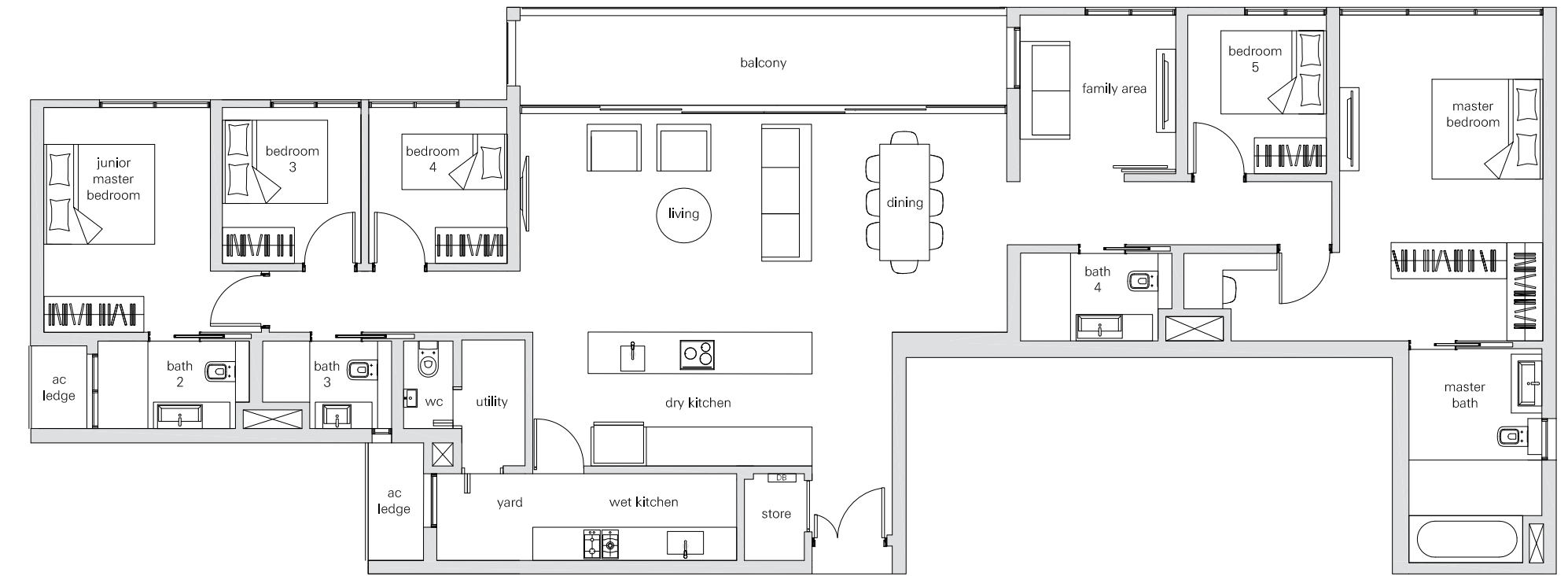
PENTHOUSE



Type PHc
224sqm / 2411sqft

Block 12
#17-17

PENTHOUSE

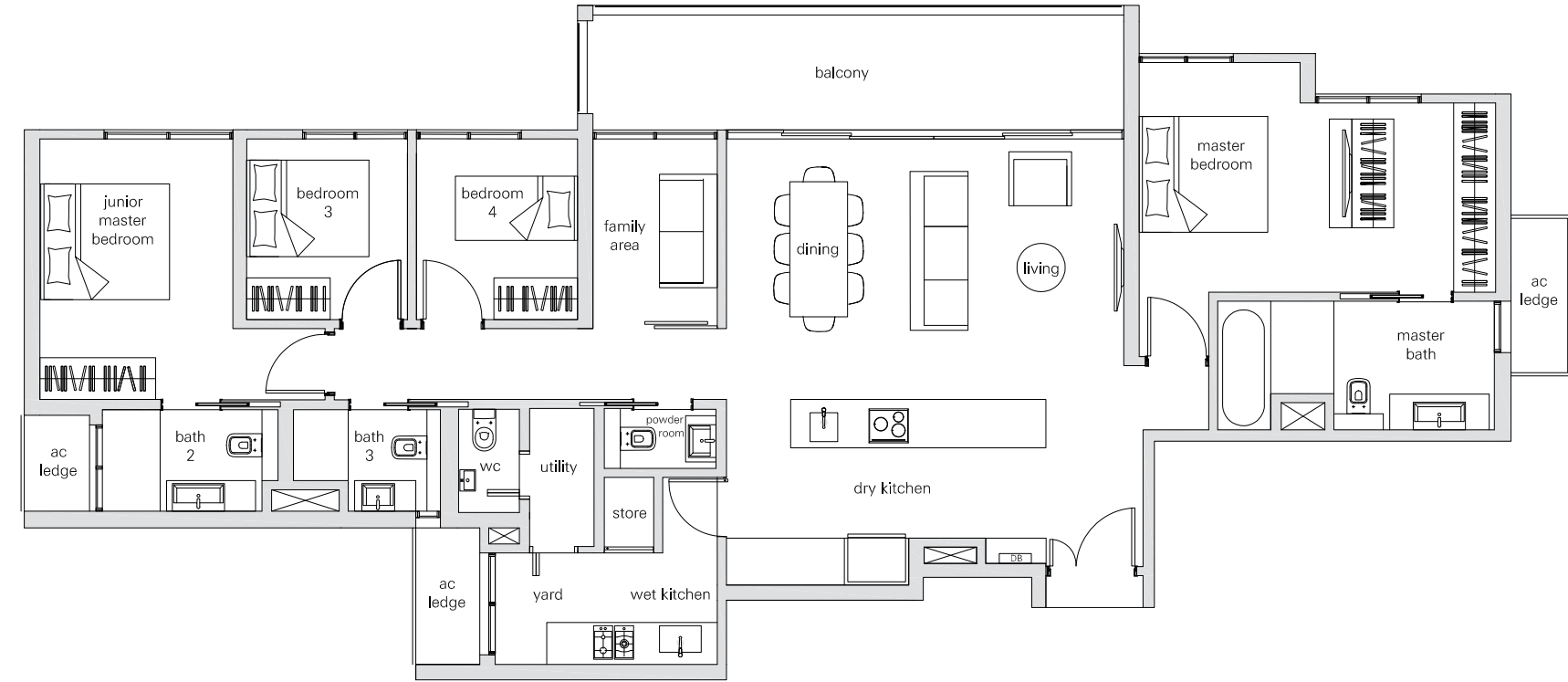


Type PHd
208sqm / 2239sqft

Block 20
#17-35

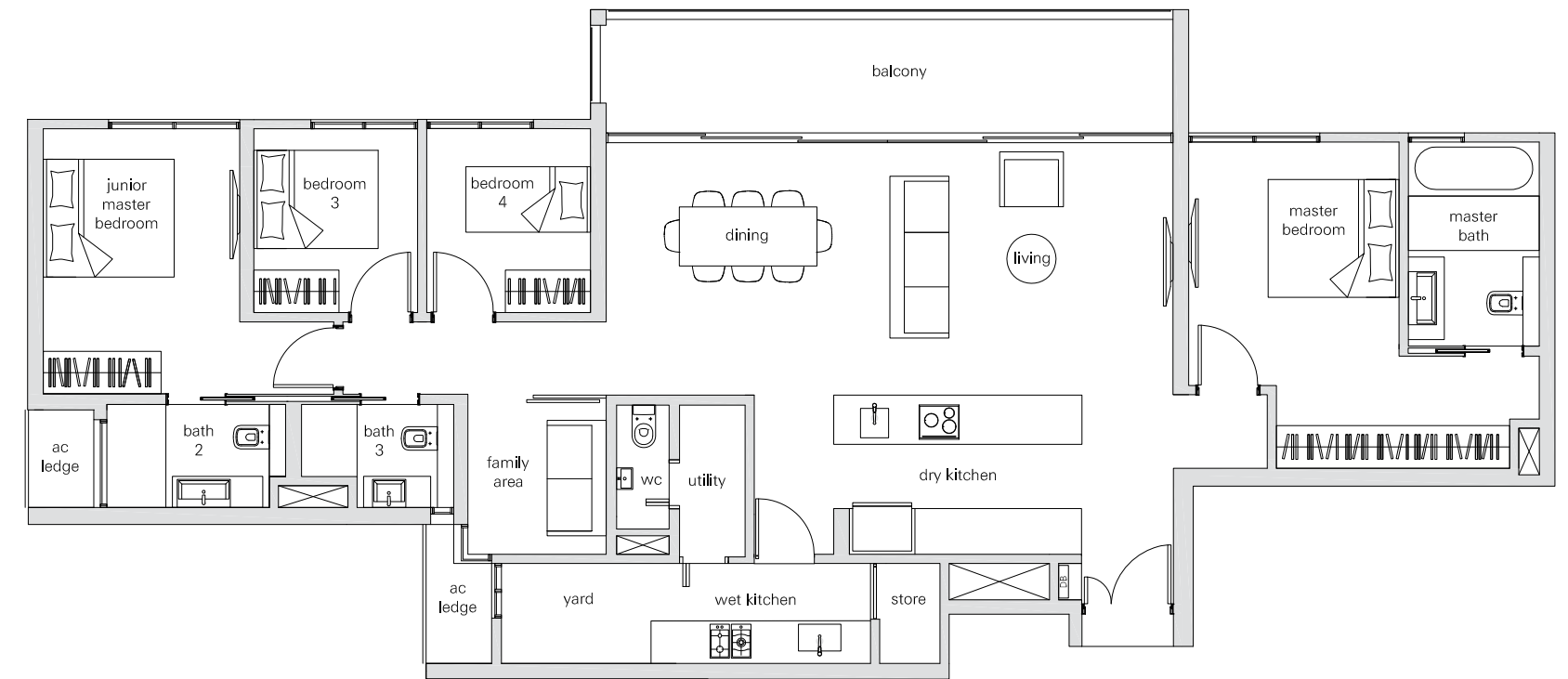


PENTHOUSE



Type PHe
171sqm / 1841sqft
Block 18
#17-30

PENTHOUSE



Type PHf
172sqm / 1851sqft
Block 16
#17-22



STATUTORY INFORMATION

Developer

Pinehill Investments Pte. Ltd.

(Co Regn No: 201215694R)

Developer's Licence No.

C1085

Tenure of Land

Leasehold Estate of 99 Years commencing from 8 April 2013

Expected Date of Vacant Possession

31 December 2019

Expected Date of Legal Completion

31 December 2022

Lot & Mukim No.

Government Resurvey Lot No.17828A of Mukim 18 at Ang Mo Kio Avenue 2

While every reasonable care has been taken in preparing this brochure, the developer and its agents shall not be held responsible or liable for any inaccuracy in its contents. All statements are believed to be correct but are not to be relied on as statements or representations of fact. (All art renderings, illustrations, photographs and pictures contained in this brochure are artists' impressions only. Photographs do not necessarily represent as-built standard specifications.) Furniture depicted in the artwork are merely artists' impressions and are not included in the sale. All plans are subject to approval by relevant authorities and may be changed without notice. All plans are not to scale. Floor areas are approximate measurements and subject to final survey. All information is current at the time of going to the press and is subject to changes as may be required and shall not form part of an offer or contract. The Sale and Purchase Agreement shall form the entire agreement between us as the Developer and the Purchaser, and shall supersede all statements, representations or promises made prior to the signing of the Sale and Purchase Agreement and shall in no way be modified by any statements, representations or promises made by us or the Marketing Agent.